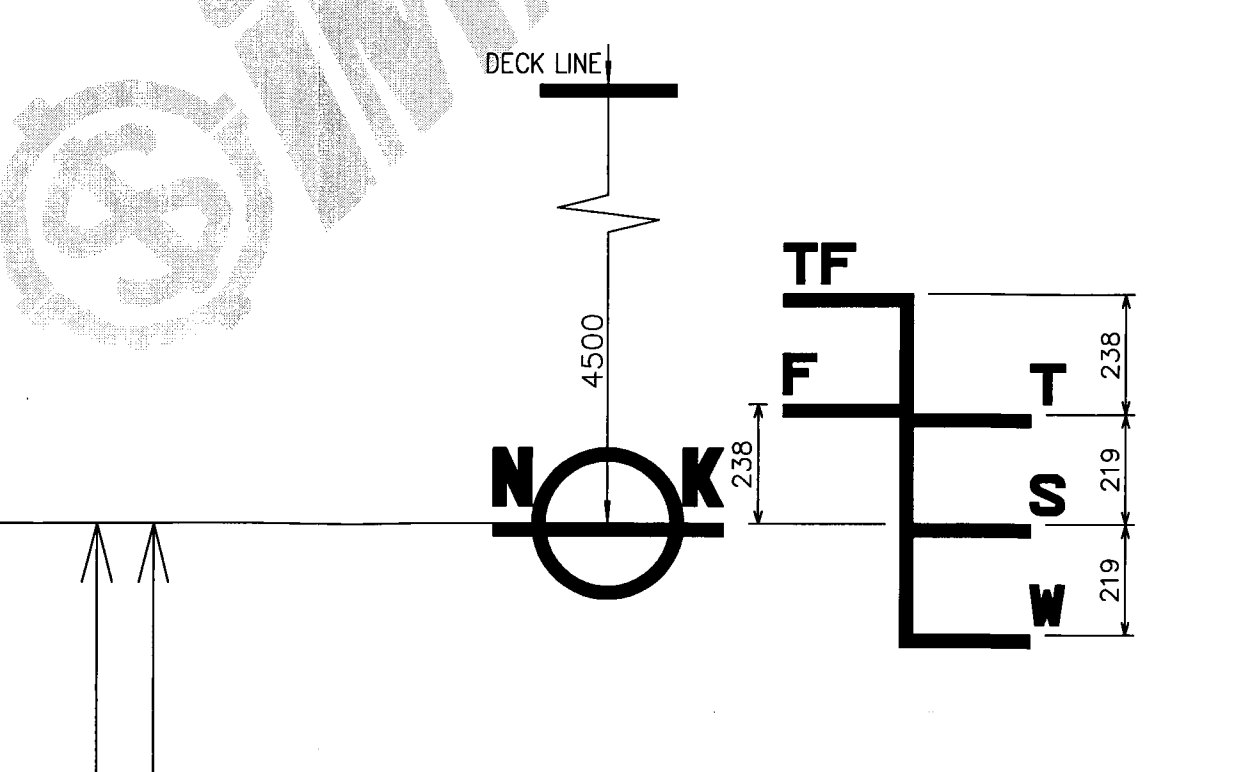
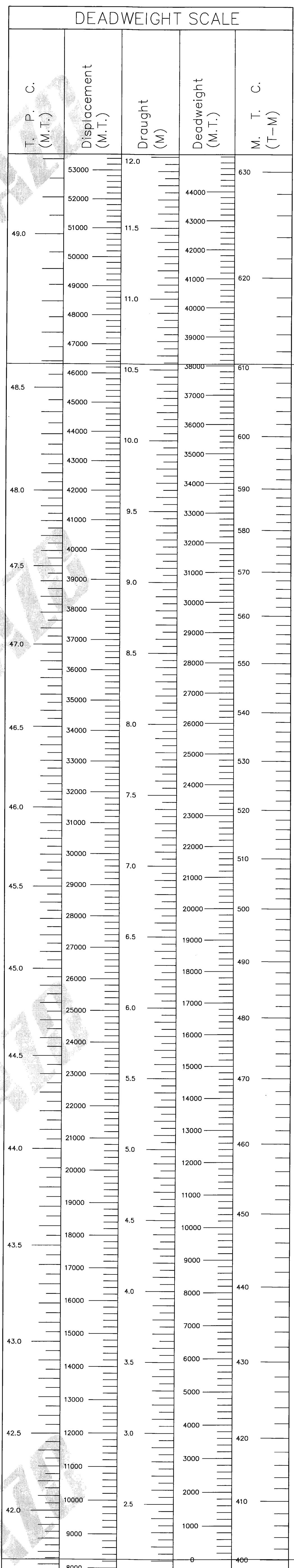


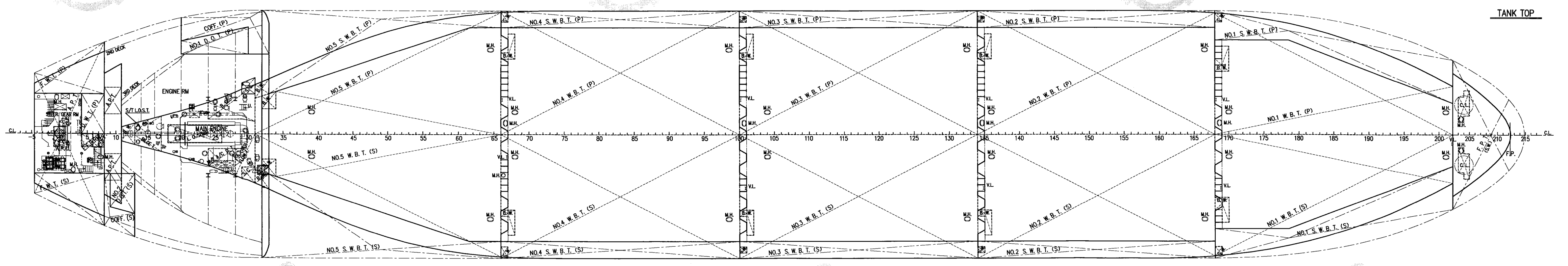
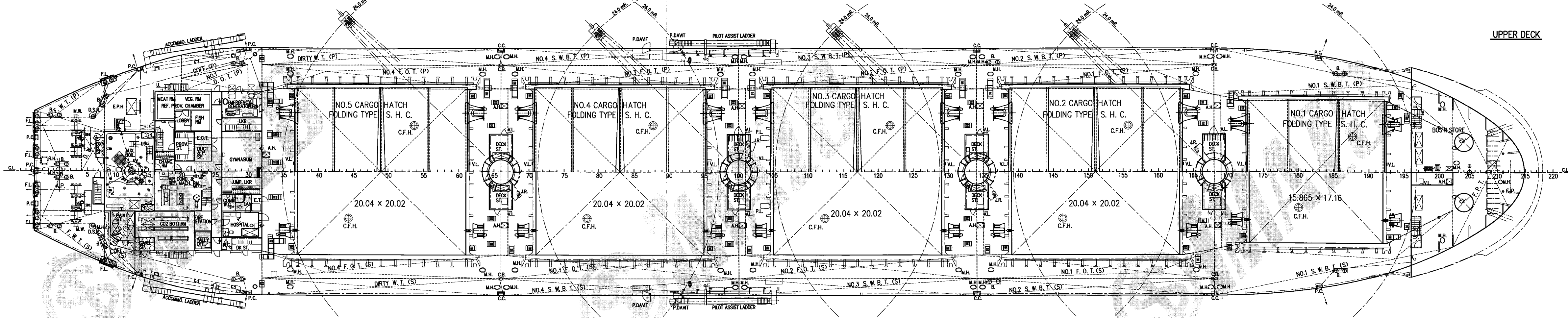
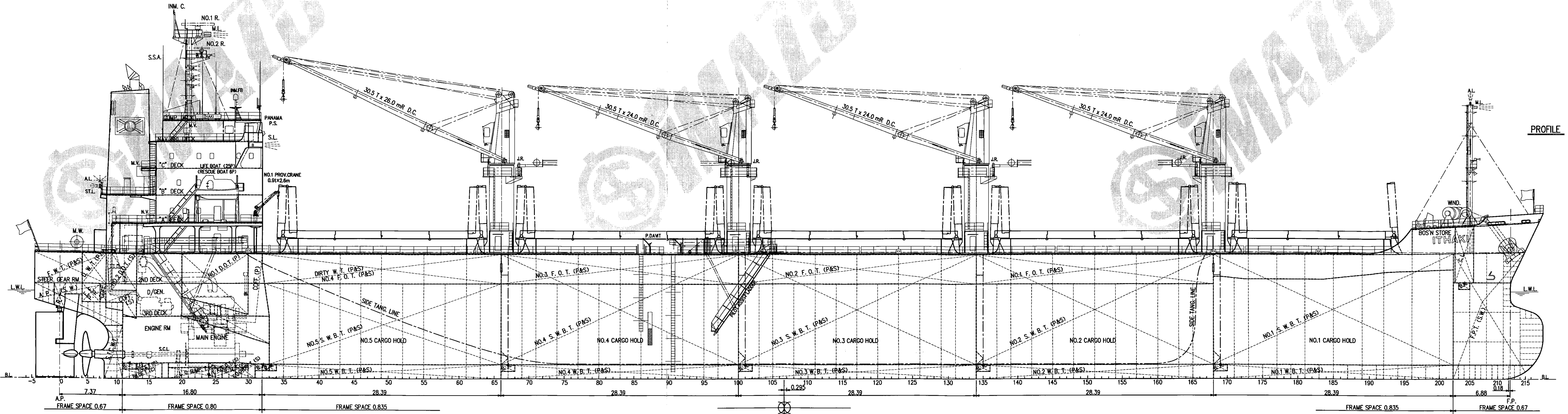
CAPACITY PLAN WITH DEADWEIGHT SCALE

M.S. ITHAKI

HISTORY
 DRAWN BY THIS WORKS.
 October 28, 2014



FULL LOAD DRAUGHT: 10.540 M
 FULL LOAD DEADWEIGHT: 38,060 M.T. (37,459 L.T.)



FREEBOARD TABLE

LOAD LINE	MARK	FRESH WATER (mm)	FRESH WATER (m)	DRAUGHT (m)	DEADWEIGHT (M.T.)	DEADWEIGHT (L.T.)
TROPICAL FRESH WATER	TF	4,043	10.997	39,101	38,484	
FRESH WATER	F	4,282	10.778	38,059	37,458	
TROPICAL	T	4,281	10.759	39,125	38,507	
SUMMER	S	4,500	10.540	38,060	37,459	
WINTER	W	4,719	10.321	36,997	36,413	
WINTER NORTH ATLANTIC	WNA	4,719	10.321	36,997	36,413	

* The Winter North Atlantic Load Line is identical with the Winter Load Line corresponding to the same vertical line, so this load line shall be marked "W".

* CARGO HOLD (GRAIN) EQUIVALENT USE: 1m³ = 35.315 C.F.

NAME	POSITION (FRAME)	CAPACITY		LCG		
		M³	C.F.	M	KG	
NO.1 CARGO HOLD	HOLD	168.5-202	7,256.50	256,263.30	-64.40	8.35
	HATCH WAY	173-192	450.92	15,924.24	-63.34	16.07
	SUM		7,707.42	272,187.54	-64.34	8.80
NO.2 CARGO HOLD	HOLD	134.5-168.5	9,261.78	327,079.76	-37.37	8.19
	HATCH WAY	139-163	670.96	23,694.95	-37.04	16.06
	SUM		9,932.74	350,774.71	-37.35	8.72
NO.3 CARGO HOLD	HOLD	100.5-134.5	9,295.86	328,283.30	-9.04	8.19
	HATCH WAY	105-129	670.96	23,694.95	-8.65	16.06
	SUM		9,966.82	351,978.25	-9.01	8.72
NO.4 CARGO HOLD	HOLD	66.5-100.5	9,284.21	327,871.88	19.34	8.19
	HATCH WAY	71-95	670.96	23,694.95	19.75	16.02
	SUM		9,955.17	351,566.83	19.37	8.72
NO.5 CARGO HOLD	HOLD	32-66.5	8,761.75	309,421.20	47.22	8.49
	HATCH WAY	37-61	670.96	23,694.95	48.14	16.06
	SUM		9,432.71	333,116.15	47.29	9.03
TOTAL			46,994.86	1,659,623.48		

* CARGO HOLD (BALE) EQUIVALENT USE: 1m³ = 35.315 C.F.

NAME	POSITION (FRAME)	CAPACITY		LCG		
		M³	C.F.	M	KG	
NO.1 CARGO HOLD	HOLD	168.5-202	6,929.13	244,702.23	-64.53	8.20
	HATCH WAY	173-192	450.92	15,924.24	-63.34	16.07
	SUM		7,380.05	260,626.47	-64.46	8.66
NO.2 CARGO HOLD	HOLD	134.5-168.5	8,904.71	314,469.83	-37.44	8.10
	HATCH WAY	139-163	670.96	23,694.95	-37.04	16.06
	SUM		9,575.67	338,164.78	-37.41	8.64
NO.3 CARGO HOLD	HOLD	100.5-134.5	8,907.56	314,570.48	-9.05	8.10
	HATCH WAY	105-129	670.96	23,694.95	-8.65	16.06
	SUM		9,578.52	338,265.43	-9.02	8.64
NO.4 CARGO HOLD	HOLD	66.5-100.5	8,908.98	314,550.00	19.34	8.11
	HATCH WAY	71-95	670.96	23,694.95	19.75	16.02
	SUM		9,579.94	338,244.95	19.37	8.64
NO.5 CARGO HOLD	HOLD	32-66.5	8,455.19	298,595.03	47.39	8.39
	HATCH WAY	37-61	670.96	23,694.95	48.14	16.06
	SUM		9,126.15	322,289.98	47.44	8.94
TOTAL			45,238.33	1,597,591.61		

* WATER BALLAST TANK (100% FULL) ρ: 1.025

NAME	POSITION (FRAME)	CAPACITY	WEIGHT		LCG	
			M³	MT	M	KG
FORE PEAK TANK	C 202-F.E.	1,031.06	1,056.84	-82.93	7.92	
NO.1 W.B.T.	P 168-202	480.63	492.65	-63.28	0.89	
	S 134-168	680.34	697.35	-37.06	0.86	
NO.2 W.B.T.	P 134-168	680.34	697.35	-37.06	0.86	
	S 100-134	682.39	699.45	-8.70	0.86	
NO.3 W.B.T.	P 100-134	682.39	699.45	-8.70	0.86	
	S 66-100	680.28	697.29	19.65	0.86	
NO.4 W.B.T.	P 66-100	680.28	697.29	19.65	0.86	
	S 31-66	485.84	497.99	46.11	0.90	
NO.5 W.B.T.	P 31-66	485.84	497.99	46.11	0.90	
	S 168-202	1,041.53	1,067.57	-63.64	9.19	
NO.1 S.W.B.T.	P 168-202	1,041.53	1,067.57	-63.64	9.19	
	S 134-168	753.02	771.85	-37.02	8.37	
NO.2 S.W.B.T.	P 134-168	753.02	771.85	-37.02	8.37	
	S 100-134	753.63	772.47	-8.64	8.37	
NO.3 S.W.B.T.	P 100-134	753.63	772.47	-8.64	8.37	
	S 66-100	753.51	772.35	19.75	8.37	
NO.4 S.W.B.T.	P 66-100	753.51	772.35	19.75	8.37	
	S 32-66	568.01	582.21	48.19	6.40	
NO.5 S.W.B.T.	P 32-66	568.01	582.21	48.19	6.40	
	S A.E.-11	299.91	307.41	84.03	9.92	
TOTAL		15,089.33	15,466.61			

* FUEL OIL TANK (100% FULL) ρ: HEAVY OIL = 0.980, DIESEL OIL = 0.880

NAME	POSITION (FRAME)	CAPACITY	WEIGHT		LCG	
			M³	MT	M	KG
NO.1 FUEL OIL T.	P 134-168	223.62	219.15	-37.18	13.65	
	S 100-134	221.16	216.74	-8.65	13.64	
NO.2 FUEL OIL T.	P 100-134	221.16	216.74	-8.65	13.64	
	S 66-100	221.16	216.74	19.75	13.64	
NO.3 FUEL OIL T.	P 66-100	221.16	216.74	19.75	13.64	
	S 32-66	221.70	217.27	48.17	13.65	
NO.4 FUEL OIL T.	P 32-66	221.70	217.27	48.17	13.65	
	SUM		1,775.28	1,739.80		
NO.1 DIESEL OIL T.	P 20-30	113.83	100.17	67.32	12.07	
NO.2 DIESEL OIL T.	S 9-13	56.74	49.93	78.96	12.95	
SUM		170.57	150.10			
TOTAL		1,945.85	1,889.9			

* LUBRICATING OIL TANK (100% FULL) ρ: 0.920

NAME	POSITION (FRAME)	CAPACITY	WEIGHT		LCG	
			M³	MT	M	KG
L.O. SUMP T.	C 18-26	17.00	15.64	70.33	0.64	
S/T L.O. SUMP T.	P 13-15	1.56	1.44	76.69	1.49	

* OTHER TANK (100% FULL)

NAME	POSITION (FRAME)	CAPACITY	LCG	
			M	KG
DIRTY W. T.	P 32-66	200.94	48.08	13.25
BILGE SLUDGE T.	P 32-66	200.94	48.08	13.25
F.O. OVERFLOW T.	P 24-31	22.27	65.55	1.05
M/E A/C DRAIN T.	S 28-31	13.82	64.23	0.93
BILGE T.	S 24-28	10.48	66.99	1.09
BILGE T.	C 11-17	16.89	76.09	1.92
S/T COOL. W. T.	C 6-11	9.42	79.87	3.14

PRINCIPAL PARTICULARS

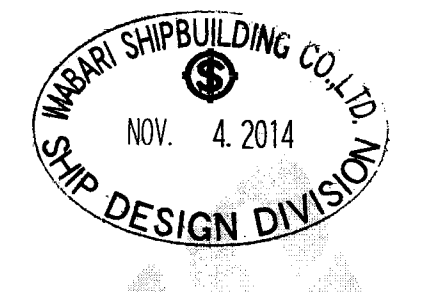
LENGTH (O.A.)	179.97 m
LENGTH (B.P.)	173.00 m
BREADTH (M.D.)	23.80 m
DEPTH (M.D.)	15.00 m
DRAUGHT (at SUMMER EXTREME)	10.540 m
DEADWEIGHT (at ASSIGNED DRAUGHT)	38,060 MT
GROSS TONNAGE (I.C.T.M.)	23,268
NET TONNAGE (I.C.T.M.)	12,101
MAIN ENGINE	MAKITA-MITSUBISHI MAN B & W 654E-M-8B.3 x 1 set
MAXIMUM CONTINUOUS RATING	6,820 kW x 110 rpm
NORMAL OUTPUT RATING	5,795 kW x 108 rpm (85% M.C.R.)
HOLD CAPACITY: (GRAIN)	46,994.86 m³
(BALE)	45,238.33 m³
SPEED	
SERVICE (d = 10.00 m (moulded) at N.O.R. Output of M/E 15% S.M.)	del. 14.5 knots
TRIAL MAK.	16.076 knots
CLASS	NIPPON KAIJI KYOKAI (NK)
CLASSIFICATION CHARACTERS	
DESCRIPTION NOTE	NS * (BULK CARRIER MODIFIED, BC-XL, GRAB, EC, DG, PSPC-MBT) (IMS) / MNS *
INSTALLATIONS CHARACTERS	STRENGTHENED FOR HEAVY CARGO LOADING WHERE HOLD NOS. 2 & 4 MAY BE EMPTY / DOUBLE HULL CONSTRUCTION APPLIED TO ALL CARGO HOLDS
INSTALLATIONS CHARACTERS	CHG, MPP, LSA, ROC, AFS

COMPLEMENT

DECK PART	ENGINE PART	BUSINESS PART
CAPTAIN	1 CHIEF ENGINEER	1
CHIEF OFFICER	1 1ST ENGINEER	1
2ND OFFICER	1 2ND ENGINEER	1
3RD OFFICER	1 3RD ENGINEER	1
BOATSWAN	1 NO.1 OILER	1 CHIEF COOK
ABLE SEAMAN	3 OILER	3
ORD. SEAMAN	2 WIPER	1 MESS MAN
TOTAL NUMBER OF OFFICERS		8 P.
TOTAL NUMBER OF CREW		13 P.
OFFICER'S SPARE (JUNIOR OFFICER CLASS)		2 P.
CREW'S SPARE (RATING CREW CLASS)		1 P.
OFFICER'S SPARE (PILOT) (JUNIOR OFFICER CLASS)		1 P.
GRAND TOTAL		25 P.

SERIAL NO. B-04

CAUTION
 THIS DRAWING OR DOCUMENT IS THE PROPERTY OF IMABARI SHIPBUILDING CO., LTD.
 REPRODUCING, COPYING, UTILIZATION FOR PURPOSES OTHER THAN AGREED, DISCLOSURE TO A THIRD PARTY, ARE STRICTLY SUBJECT TO PRIOR WRITTEN AGREEMENT BY IMABARI SHIPBUILDING CO., LTD.



FINISHED PLAN
 BASIC DESIGN GROUP
 APPROVED: [Signature] 7.M.
 CHECKED: [Signature]
 DRAWN: [Signature]
 SHIP NO. S-H606 CLASS NK
 M.S. "ITHAKI"
 IMO 9691632
 CAPACITY PLAN WITH DEADWEIGHT SCALE
 SCALE: 1:1000 DWG. NO. C-0300
 IMABARI SHIPBUILDING CO., LTD. SHIMANAMI SHIPYARD CO., LTD. DATE: October 28, 2014